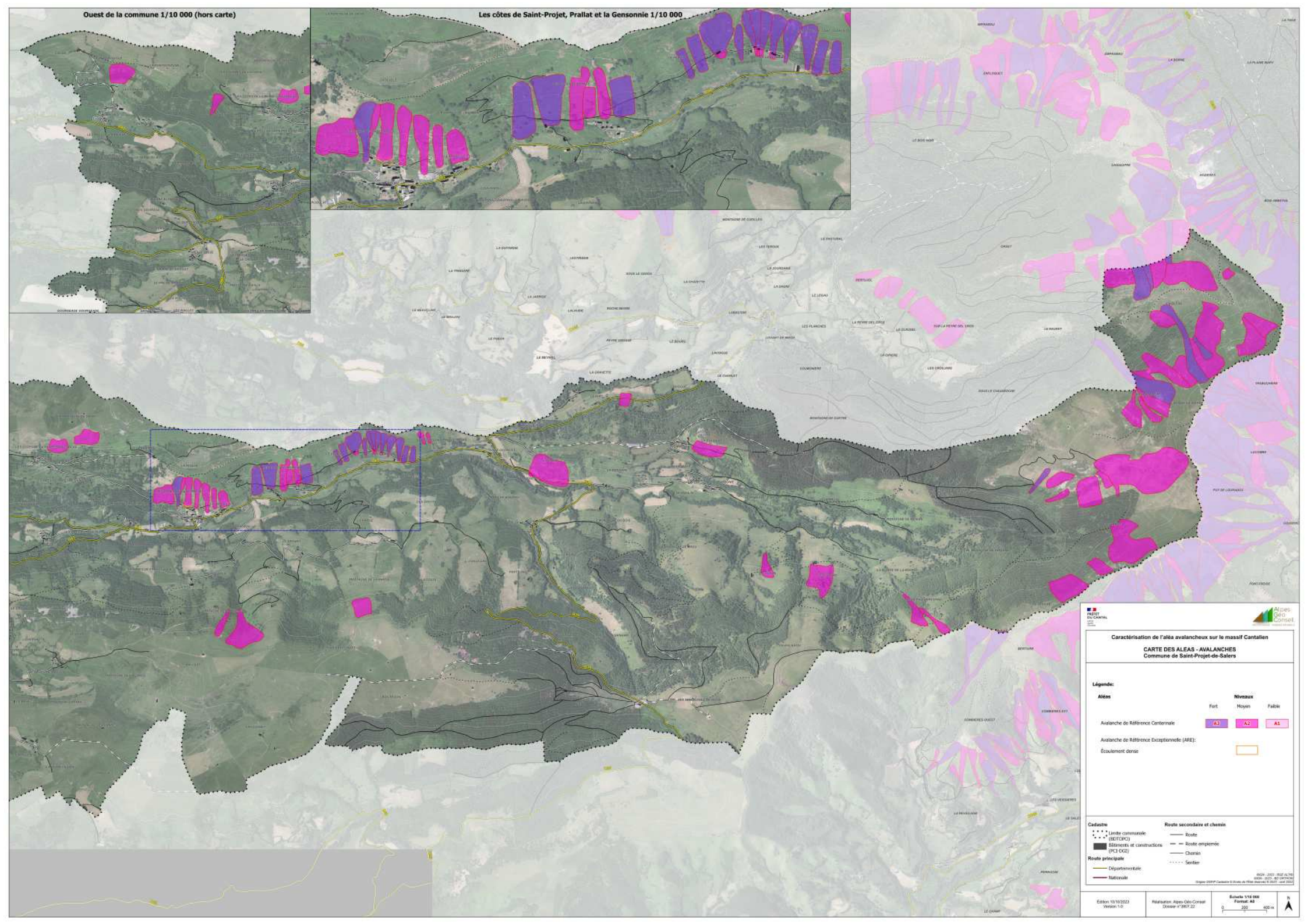




Ouest de la commune 1/10 000 (hors carte)

Les côtes de Saint-Projet, Prallat et la Gensonnie 1/10 000



**Caractérisation de l'aléa avalancheux sur le massif Cantalien**  
**CARTE DES ALEAS - AVALANCHES**  
 Commune de Saint-Projet-de-Salers

**Légende:**

<b>Aleas</b>	<b>Niveaux</b>
	Fort    Moyen    Faible
Avalanche de Référence Cantonale	<span style="background-color: #4b0082; color: white; padding: 2px;">A3</span> <span style="background-color: #6a329f; color: white; padding: 2px;">A2</span> <span style="background-color: #9966cc; color: white; padding: 2px;">A1</span>
Avalanche de Référence Exceptionnelle (ARE):	<span style="border: 1px solid orange; width: 15px; height: 10px; display: inline-block;"></span>
Écoulement dense	<span style="border: 1px solid black; width: 15px; height: 10px; display: inline-block;"></span>

<b>Cadastré</b>	<b>Route secondaire et chemins</b>
<span style="border-top: 1px dashed black; width: 20px; display: inline-block;"></span> Ligne communale (GEMAPI)	<span style="border-bottom: 1px solid black; width: 20px; display: inline-block;"></span> Route
<span style="background-color: black; width: 10px; height: 10px; display: inline-block;"></span> Bâtières et constructions (PCI-CGI)	<span style="border-bottom: 2px solid black; width: 20px; display: inline-block;"></span> Route empiérrée
<span style="border-bottom: 2px solid black; width: 20px; display: inline-block;"></span> Route principale	<span style="border-bottom: 1px solid black; width: 20px; display: inline-block;"></span> Chemin
<span style="border-bottom: 1px dashed black; width: 20px; display: inline-block;"></span> Départementaire	<span style="border-bottom: 1px dotted black; width: 20px; display: inline-block;"></span> Sentier
<span style="border-bottom: 3px solid black; width: 20px; display: inline-block;"></span> Nationale	

Révisé: 2017 - Révisé: 2017 - Révisé: 2017  
 Échelle: 1/10 000  
 Format: A3  
 Édition: 10/10/2023  
 Version: 1.0  
 Révisé par: Alpes Geo Conseil  
 Dessiné: 17/07/22  
 0 200 400 m